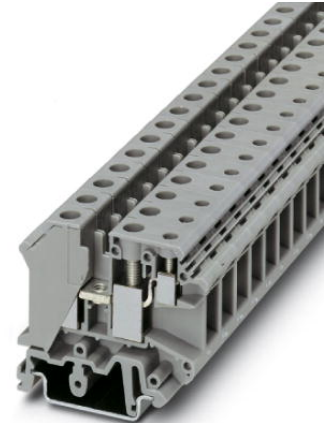


UK 10-PLUS

Order No.: 3001381

<http://eshop.phoenixcontact.de/phoenix/treeViewClick.do?UID=3001381>

1-level terminal block with double connection on one side, cross section: 0.5 - 10 mm², AWG: 24 - 6, width: 10.2 mm, color: gray

Commercial data

| | |
|--------------------------|--------------------|
| EAN | 4017918089870 |
| Pack | 50 Pcs. |
| Customs tariff | 85369010 |
| Weight/Piece | 0.021534 KG |
| Catalog page information | Page 285 (CL-2007) |

Product notes

WEEE/RoHS-compliant since:
01/01/2003



<http://www.download.phoenixcontact.com>
Please note that the data given here has been taken from the online catalog. For comprehensive information and data, please refer to the user documentation. The General Terms and Conditions of Use apply to Internet downloads.

Technical data

General

| | |
|------------------------------------|------|
| Number of levels | 2 |
| Number of connections | 3 |
| Color | gray |
| Insulating material | PA |
| Inflammability class acc. to UL 94 | V0 |

Dimensions

| | |
|------------------|---------|
| Length | 53 mm |
| Width | 10.2 mm |
| Height NS 35/7,5 | 47 mm |
| Height NS 35/15 | 54.5 mm |
| Height NS 32 | 52 mm |

Technical data

| | |
|----------------------------------|---|
| Rated surge voltage | 8 kV |
| Pollution degree | 3 |
| Surge voltage category | III |
| Insulating material group | I |
| Connection in acc. with standard | IEC 60947-7-1 |
| Nominal current I_N | 76 A (the maximum load current must not be exceeded by the total current of all connected conductors) |
| Nominal voltage U_N | 800 V |

Connection data

| | |
|--|---------------------|
| Conductor cross section solid min. | 0.5 mm ² |
| Conductor cross section solid max. | 16 mm ² |
| Conductor cross section stranded min. | 0.5 mm ² |
| Conductor cross section stranded max. | 10 mm ² |
| Conductor cross section AWG/kcmil min. | 20 |
| Conductor cross section AWG/kcmil max | 6 |
| Conductor cross section stranded, with ferrule without plastic sleeve min. | 0.5 mm ² |
| Conductor cross section stranded, with ferrule without plastic sleeve max. | 10 mm ² |
| Conductor cross section stranded, with ferrule with plastic sleeve min. | 0.5 mm ² |
| Conductor cross section stranded, with ferrule with plastic sleeve max. | 6 mm ² |
| 2 conductors with same cross section, solid min. | 0.5 mm ² |
| 2 conductors with same cross section, solid max. | 4 mm ² |
| 2 conductors with same cross section, stranded min. | 0.5 mm ² |
| 2 conductors with same cross section, stranded max. | 4 mm ² |

| | |
|---|---------------------|
| 2 conductors with same cross section, stranded, ferrules without plastic sleeve, min. | 0.5 mm ² |
| 2 conductors with same cross section, stranded, ferrules without plastic sleeve, max. | 2.5 mm ² |
| 2 conductors with same cross section, stranded, TWIN ferrules with plastic sleeve, min. | 0.5 mm ² |
| 2 conductors with same cross section, stranded, TWIN ferrules with plastic sleeve, max. | 4 mm ² |
| Type of connection | Screw connection |
| Stripping length | 11 mm |
| Screw thread | M4 |
| Tightening torque, min | 1.5 Nm |
| Tightening torque max | 1.8 Nm |

Certificates / Approvals

Approval logo



CSA

| | |
|--------------------------------|--------------|
| Comments | Feed-through |
| Nominal voltage U _N | 600 V |
| Nominal current I _N | 65 A |
| AWG/kcmil | 24-6 |
| Comments | Pick-off |
| Nominal voltage U _N | 600 V |
| Nominal current I _N | 20 A |
| AWG/kcmil | 28-12 |

CUL

| | |
|--------------------------------|-------|
| Nominal voltage U _N | 600 V |
| Nominal current I _N | 65 A |
| AWG/kcmil | 24-6 |

UL

| | |
|--------------------------------|-------|
| Nominal voltage U _N | 600 V |
| Nominal current I _N | 65 A |

| | |
|---------------|-------------------------|
| AWG/kcmil | 24-6 |
| Certification | CSA, CUL, GOST, PRS, UL |

Accessories

| Item | Designation | Description |
|-----------------|-------------------------------|---|
| Assembly | | |
| 3022218 | CLIPFIX 35 | Snap-on end bracket, for 35 mm NS 35/7.5 or NS 35/15 mounting rail, can be fitted with Zack strip ZB 8 and ZB 8/27, terminal strip marker KLM 2 and KLM, width: 9.5 mm, color: gray |
| 1201413 | E/UK 1 | End brackets, for supporting the ends of double-level and three-level terminal blocks, width: 10 mm, color: gray |
| 1201028 | NS 32 AL UNPERF 2000MM | G rail 32 mm (NS 32) |
| 1201280 | NS 32 CU/120QMM UNPERF 2000MM | G-profile DIN rail, deep-drawn, material: Copper, unperforated, height 15 mm, width 32 mm, length 2 m |
| 1201358 | NS 32 CU/35QMM UNPERF 2000MM | G-profile DIN rail, material: Copper, unperforated, height 15 mm, width 32 mm, length 2 m |
| 1201002 | NS 32 PERF 2000MM | G-profile DIN rail, material: Steel, perforated, height 15 mm, width 32 mm, length 2 m |
| 1201015 | NS 32 UNPERF 2000MM | G-profile DIN rail, material: Steel, unperforated, height 15 mm, width 32 mm, length 2 m |
| 0801762 | NS 35/ 7,5 CU UNPERF 2000MM | DIN rail, material: Copper, unperforated, height 7.5 mm, width 35 mm, length: 2 m |
| 0801733 | NS 35/ 7,5 PERF 2000MM | DIN rail, material: Steel, perforated, height 7.5 mm, width 35 mm, length: 2 m |
| 0801681 | NS 35/ 7,5 UNPERF 2000MM | DIN rail, material: Steel, unperforated, height 7.5 mm, width 35 mm, length: 2 m |
| 1201756 | NS 35/15 AL UNPERF 2000MM | DIN rail, deep-drawn, high profile, unperforated, 1.5 mm thick, material: Aluminum, height 15 mm, width 35 mm, length 2 m |
| 1201895 | NS 35/15 CU UNPERF 2000MM | DIN rail, material: Copper, unperforated, 1.5 mm thick, height 15 mm, width 35 mm, length: 2 m |
| 1201730 | NS 35/15 PERF 2000MM | DIN rail, material: Steel, perforated, height 15 mm, width 35 mm, length: 2 m |
| 1201714 | NS 35/15 UNPERF 2000MM | DIN rail, material: Steel, unperforated, height 15 mm, width 35 mm, length: 2 m |
| 1201798 | NS 35/15-2,3 UNPERF 2000MM | DIN rail, material: Steel, unperforated, 2.3 mm thick, height 15 mm, width 35 mm, length: 2 m |
| 2770215 | TS-KK 3 | Separating plate, for electrical separation of neighboring bridges, can be fitted later, no loss of pitch, color: Gray |

Bridges

| | | |
|---------|---------|---|
| 0203153 | EB 2-10 | Insertion bridge, 2-pos., fully insulated |
|---------|---------|---|

| | | |
|---------|-------------|--|
| 0203328 | EB 3-10 | Insertion bridge, 3-pos., fully insulated |
| 0203137 | EB 10-10 | Insertion bridge, 10-pos., divisible, fully insulated |
| 0203483 | FBI 2-10 | Fixed bridge, for cross connections, with screws, screw heads without insulation, 2-pos. |
| 0203276 | FBI 10-10 | Fixed bridge, 10-pos., screw heads with insulating collar, divisible, with screws |
| 1303337 | IS-K 10 | Bridge bar isolator, as distance piece |
| 0301521 | ISSBI 10-10 | Isolator bridge bar, 10-position, divisible, with screws, for switchable branches |

Marking

| | | |
|---------|------------------|---|
| 1007248 | SBS10:UNBEDRUCKT | Marker cards, unprinted, for individual labeling with the M-PEN, 250-section, perforated, white plastic |
| 1004225 | WS 4-10 | Warning plate, with 2 plastic screws, across 4 terminal blocks, pitch 10 mm |
| 1004429 | WS 5-10 | Warning plate, with 2 plastic screws, across 5 terminal blocks, pitch 10 mm |
| 1050525 | ZB10:SO/CMS | Zack strip, 10-section, divisible, special printing, marking according to customer requirements |

Plug/Adapter

| | | |
|---------|---------------------|---|
| 0303299 | PSB 4/7/6 | Test plug socket, not insulated, length: 7 mm, screw thread width: 4 mm, socket width: 6 mm |
| 0303406 | PSBJ 4/15/6 BK | Test plug socket, insulated, length: 15 mm, screw thread width: 4 mm, socket width: 6 mm, insulation material in black |
| 0303354 | PSBJ 4/15/6 BU | Test plug socket, insulated, length: 15 mm, screw thread width: 4 mm, socket width: 6 mm, insulation material in blue |
| 0303419 | PSBJ 4/15/6 FARBLOS | Test plug socket, insulated, length: 15 mm, screw thread width: 4 mm, socket width: 6 mm, insulation material transparent |
| 0303370 | PSBJ 4/15/6 GN | Test plug socket, insulated, length: 15 mm, screw thread width: 4 mm, socket width: 6 mm, insulation material in green |
| 0303396 | PSBJ 4/15/6 GY | Test plug socket, insulated, length: 15 mm, screw thread width: 4 mm, socket width: 6 mm, insulation material in gray |
| 0303325 | PSBJ 4/15/6 RD | Test plug socket, insulated, length: 15 mm, screw thread width: 4 mm, socket width: 6 mm, insulation material in red |
| 0303383 | PSBJ 4/15/6 VT | Test plug socket, insulated, length: 15 mm, screw thread width: 4 mm, socket width: 6 mm, insulation material in violet |
| 0303312 | PSBJ 4/15/6 WH | Test plug socket, insulated, length: 15 mm, screw thread width: 4 mm, socket width: 6 mm, insulation material in white |
| 0303367 | PSBJ 4/15/6 YE | Test plug socket, insulated, length: 15 mm, screw thread width: 4 mm, socket width: 6 mm, insulation material in yellow |

Address

PHOENIX CONTACT GmbH & Co. KG
Flachsmarktstr. 8
32825 Blomberg, Germany
Phone +49 5235 3 00
Fax +49 5235 3 41200
<http://www.phoenixcontact.de>



© 2008 Phoenix Contact
Technical modifications reserved;